



2013

PRODUCTS CATALOGUE



170 Milner, Toronto, ON,
Canada, M1S 3R3
www.tortechsound.com

Telephone: (416) 298-0448
Fax: (416) 298-4211
Email: sales@tortechsound.com

INTRODUCTION

Tortech Engineered Sound Products is a well established company name, offering a comprehensive line of top quality products. The company offers fast and economical access to sound products from our worldwide productions.

Our excellent manufacturing capabilities give us the leading edge. This permits us to help you solve your complex customer design needs. The company is small enough to give you personalized service, yet large enough to assure professional results.

Since our start up in the 1970's, we have built a satisfied customer base across Canada and the United States. We pride ourselves on being able to handle your specialized sound needs.

TORTECH has made its mark with the help of our loyal customers in so many installations that it is too numerous to list. We are constantly inspired by our customers to engineer new and innovative items. We always look for new engineering challenges and are constantly looking to improve the quality of all products.

INDEX

24 Volt Self Amplified System.....	3
24 Volt Telephone Paging.....	5
Amplifiers & Mixers.....	5-11
Baffles & Back Boxes.....	13-14
Fanon Megaphones.....	15
Horns & Drivers.....	16-19
Intercom.....	20
Line Matching Transformers.....	20
Microphones and Microphone Accessories.....	21-24
Plasma Brackets/ Projection Brackets.....	25-26
Portable P.A. Systems.....	27
Sound Masking.....	28
Speakers.....	29-35
Cone Speakers.....	31
EMS Indoor & Outdoor Speakers.....	32
Hanging Speakers.....	32
Outdoor Landscape Speakers.....	33
Omni Dome-Surround Sound Speakers	34-35
Tortech Cage.....	36
Volume Controls.....	36

24 VOLT SELF AMPLIFIED SYSTEM

MX8 MIXER

The Tortech MX8 mixer is designed to be used with the self amplified horns and speakers. It has automatic muting for music over ride and EMC emergency over ride circuit for evacuation tones.



Product Specifications:

Accessories	Rack mount kit for standard 19" cabinet
Controls	Master volume, bass, treble,
Inputs	3 balanced screw terminal microphone inputs, 3 auxiliary inputs, 600 Ohm telephone paging input
Power	24 V power input
Size	3" height by 12" depth
Weight	6 lbs

VCM 22 MIXER



- Microphone Mixer
- Allows microphone paging on 24 Volt amplified system

VC 10924



- Master Volume Control 24 Volt System

24 VOLT TELEPHONE PAGING



24 Volt
Amplified 5/ 15/ 30 W
Horns



APS1
1 Watt Amplified
24 Volt Speaker



AWB -1
1 Watt 24 Volt
Amplified Speaker



T&R 801 / T&R 803
Night Ringer &
Tone Generator



APH 15-LR90 (2)
1 & 2 Line 90 V
Ringer



APH-15 LR
Combination
Ringer & Paging Horn



9 Zone
Paging Relay
ZCU-9



Telephone Paging
70 Volt PA Amps
20 TO 360 Watts



70 V Paging Horns
SH15T - 15 W / SH30T 30W
TH16T 16 W TH32T 32W

PA AMPLIFIERS

PA 20 / 35



Product Specifications:

Controls	2 Mic, 1 Aux, Master, 2 or 3 Tone
Dimensions	3" x 11.5" x 7.7"
Frequency Response	150 Hz - 20 kHz(20) 70 Hz - 20 kHz(35)
Inputs	2 Mics, 1 Aux/Telephone
Power Output	20(20) 35(35) Watts @ 4 Ohm
Power Source	12V DC / 120V AC(20) 120V AC(35)
Sensitivity - Aux	130 mv
Sensitivity - Mics	2.5 mv(20) 1.8 mv(35)
Signal to Noise	65dB(Mic), 71dB(Aux)
Speaker Outputs	70V 16/8/4 Ohm

PA 40V / 65V



Product Specifications:

Automatic Mute	For music on telephone or mic #1 input
Aux Input	71 dB
Dimensions	3.5" x 11.5" x 7.8"
Frequency Response	60 - 20,000 Hz
Microphone #1	Balanced switchable from telephone input to mic
Microphone #2	1/4" unbalanced low Z input
Power Out	40(40V) 60(65V) Watts
Power Source	120V AC
Telephone	600 Ohm line

AMPLIFIERS

PA60R / PA120R - with Am/Fm Tuner & Remote Control



SPECIFICATIONS:

- Power 60/120 Watts RMS
- Am/Fm Digital Tuner With **Remote**
- Two Microphone XLR/ Screw Inputs
- One Aux Input RCA
- Automatic Mute On Paging
- Telephone 600 Ohm
- Music On Hold
- 70 Volt 8 Ohm Speaker Line
- Line In / Out 600 Ohm 1 Volt
- Frequency Response 60-20khz
- Rack Mount Kits
- Master Volume

- 4 Microphone / Line / Phantom, 1 Aux inputs
- 600 Ohms telephone input interface
- Bass and treble tone controls
- 50-15,000 Hz frequency response
- 0.5% Harmonic distortion full spectrum
- 70 Volt / 25 Volt & 4 Ohms speaker
- Master volume control
- Priority microphone input
- Automatic mute
- 115 Volt AC or 24 Volt DC power input
- Dimensions 483 x 305 x 190.5 mm

PA 60



PAR 120 RECEIVER AM/FM
120 WATTS - 45 WATTS RMS

- Power 120 watts RMS
- Am/fm digital tuner with pre-sets
- four microphone inputs with priority
- Two auxiliary inputs aux 1 aux 2
- Telephone 600 ohm page input
- Four switching speaker zones
- Bass and treble controls
- Distortion > 1%
- Phantom or line switchable on XLR inputs
- Speaker line 70/25v and 4 ohm
- Rack mounting included
- Master volume control
- Frequency response 50-15khz
- Dimensions 480 x 320 x 133 mm
- Weight 25 lbs



- 4 Microphones / Line / Phantom, 1 Aux input
- 600 Ohms telephone input interface
- Tone control: Bass +/-10dB, Treble +/-10dB
- 30-20,000 Hz frequency response
- 0.5% Harmonic distortion full spectrum
- 70 / 25 Volt & 16 / 8 / 4 Ohms speaker outputs
- S / N: Mics 60+dB, Aux 70+dB, Main 80+dB
- Auto mute on microphone / telephone
- RCA 1 Volt at 600 Ohms
- 4 speaker zones controls
- 6 VC controls, plus master, monitor, and telephone.
- 120 Volt AC or 24 Volt DC power input

PA 1060 / PA1120 / PA1240
60 - 120 - 240 WATTS RMS



- Tortech power amplifier PAS1360 is designed to produce the best power, reliability and features providing 360 Watts @ 70 Volt / Booster amp with RCA/XLR/SCREW inputs 2-RCA line inputs/ 2 balanced XLR inputs 600 ohm balanced telephone input
- Frequency response 35– 18 KHz /19 inch rack

PAS 1360



- 40 Watts RMS / Zone
- Five (5) programmed inputs to 4 zones
- 600 Ohms telephone input interface
- Bass and treble tone controls
- 50-15,000 Hz frequency response
- 0.5% Harmonic distortion full spectrum
- 70 Volt / 100 Volt / 4 Ohms speaker
- Master volume control
- Priority microphone input
- Automatic mute
- 4 speaker zones
- 115 Volt AC or 24 Volt DC power input
- 483 mm (19") rack mount built in
- Dimensions 483 x 305 x 190.5 mm

MZ- 450 4 ZONE AMP
160 WATTS RMS



AMPLIFIERS

PA 1240USB

4 Zone with Separate Volume Controls with USB / SD



Product Specifications:

Bridge	In / Out bridging
Dimensions	480mm x 427mm x 132mm
Frequency Response	20 – 20KHz @ 8 Ohms
Inputs	Mic #1 balanced XLR Input + 24V phantom + line input Mic #2 + 3 + 4 XLR plus 24V phantom + line input
MOH	1 Watt 8 Ohm With Volume
Muting	Mic #1 Override
Out	Line out 600 Ohms
Power	240 Watts
Power Require	120 VAC 60 Hz
Signal to Noise	Mic 66 dB Aux 80 dB
Speaker Outputs	4 – 16 Ohms 70. / 25 & 100 Volt
T.H.D.	Less than .5% @KHz
Tone	Bass / Treble
Weight	14 Kg
Zoning with Volume	1 to 4 zones + all call

Did you know that Tortech Sound does custom modifications to our products to best serve your needs and technical requirements? Give us a call or email us to find out more!

Telephone: 416-298-0448
Email: sales@tortechsound.com

AMPLIFIERS

PA1350 / PA1450 / PA 1550 Integrated Amplifiers



Product Specifications:

Dimensions	484 x 446 x 132
Frequency Response	50 - 15 KHz
Inputs	Mic #1 balanced 1/4" input / Mic #2 XLR plus 48V phantom / Mic #3 XLR plus 48V phantom / Aux 1 & 2 with RCA inputs
Muting	Mic #1 override
Power Consumption	600 Watts
Power Require	120 VAC 60Hz
Rated Power	PA1350: 350W RMS / PA1450: 450W RMS / PA 1550: 550W RMS
S/N Ratio	Mic 66 dB AUX 80Db
Speaker Outputs	4 - 16 Ohms 70 / 100V
T.H.D.	Less than 1% @ 1KHz
Tel Input	600 Ohm with mute
Tone	Bass / Treble
Weight	23 Kg

PAR30 / PAR60 – PA Amplifier With AM/FM Tuner Plus USB Port



- PAR30 30 Watts RMS
- PAR60 60 Watts RMS
- Frequency Response 100-20,000Hz
- THD >.5%
- AM/FM Tuner
- USB Port
- Master Volume Control
- Bass Mid Treble Equalizer
- Weight 4.3 / 5.8 Kg
- Telephone 600 Ohm or Microphone Input
- Microphone #2 Input
- Auto Mute on Tel/Mic
- Aux Input
- Music On Hold
- 70 Volt Speaker Line
- 8 / 4 Ohm Speaker Line
- Rack Mount available
- Dimensions 90 (4) x 270 (10.5) x 260 (9.5)

MULTI-ZONE AMPLIFIER

MZ-4120

480 Watts RMS

120 Watts RMS / Zone



The Tortech Mz-450 Is a Multi-Channel Public Address Amplifier That Has 4 Separate Amplifiers of 40 Watt Each. There are five inputs that can be directed to any of the four separate zones plus is a 600 ohm telephone line to page each zone selected. Each Of The 4 Amps Has A Line Out To Larger Amplifiers.

- Five (6) programmed inputs to 4 zones
- Three XLR microphone | Two RCA auxiliary | Tel page
- 600 Ohms telephone input interface
- Bass and treble tone controls
- 50-15,000 Hz frequency response
- 0.5% Harmonic distortion full spectrum
- 70 Volt / 100 Volt / 4 Ohms speaker
- Master volume control
- Priority microphone input
- Automatic mute
- 4 speaker zones
- 115 Volt AC or 24 Volt DC power input
- 483 mm (19") rack mount built in
- Dimensions 483 x 305 x 190.5 mm

MX6S - Phase Shifter Mixer Feedback Eliminator



The TORTECH MX6S 6 channel XLR Phase Shifting microphone mixer is designed to eliminate feedback. The mixer has a balanced XLR and a line level RCA output 6 CH phantom microphone input.

- 6 CH independent microphone power control/volume switch
- Independent microphone and line input switch
- EFX port support connecting to conference system
- Frequency shift: 5Hz±1Hz
- Output impedance: ≤600Ω
- Microphone Gain: 5~14dB

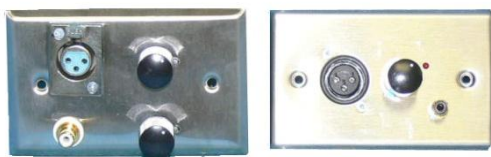
MIXERS

MX-8 MIXER

- 9 channel microphone mixer
- 4 microphone with screw terminals
- Telephone 600 ohm paging input on mic #1
- Auto mute on mic #1 or tel page
- 3 aux input 47 K ohms with RCA
- EMC inputs for emergency signals
- 100-10,000 Hz frequency response
- Rack mounted 483 mm brackets (19")
- Weight 1.5 kg
- 24 Volt DC power input
- Dimensions 483 x 44.5 x130 mm



MX 22/ MX222 Remote Mixer



The **MX22** is a 24 Volt remote microphone input and or auxiliary input. Multiple mx22 can be stacked into one auxiliary input. The mx22 has a female XLR microphone input and a RCA auxiliary input. The remote mixer fits on a single gang stainless plate and only requires two twisted pairs of wire to operate at long distances. A MXSB security box is also available. The tt246 24 volt dc power supply is required.

TUNERS

AM/FM TUNER TTU100R

Dimensions	482 x 240 x 45 mm
DNR Sensitivity - AM	<5Mv/M
DNR Sensitivity - FM	>20uV
Frequency Range - AM	522 - 1820 KHz
Frequency Range - FM	87 - 108 MHz
Input Impedance	1K Ohm
Memory Preset	10+
Power Out	500mV RMS
Power Source	120V AC
Signal to Noise	AM>40dB FM>45dB
Weight	1 Kg



TELEPHONE PAGING AMPLIFIERS WITH NIGHT RINGERS & WALL BRACKET

TPA 60 & TPA 120



Product Specifications:

Auto Mute	Tel Page and Mic #1
Aux Input	2 Music Input
Microphone	3 Microphone Inputs 2 XLR-1-HPhone
Night Ringer	Dry Contract Control w/ Volume Control
Phantom	48 Volt
Power	60 Watts / 120 Watts
Rack Mount	19 Inch Mount
Size	16.5 x 14.5 x 3.5 Inches
Speaker Line	70 / 25 Volt & 4 Ohm
Tel Page	600 Ohm w/ Volume
Tone	Bass / Treble Controls
Wall Bracket	Included
Weight	14.5 & 16.5 lbs

TUR 800

The TORTECH **TRU 800** universal ringer is engineered to provide ringing over paging on all types of telephones and systems.

Terminal # 1 is 24Volt DC power
Terminal # 2 is Tip and Ring (AUDIO)
Terminal # 3 is Dry Contact from KSU
Terminal # 4 is 1st Line 90Volt Ringer
Terminal # 5 is 2nd Line Ringer 90 Volt



TNR 800 NIGHT RINGER / TONE GENERATOR

The TORTECH T&R 800 is designed to produce a variable tone through a PA amplifier.



- Simply connect the modular jack to the telephone jack
- Plug the AC adapter into the power duplex
- Insert the RCA in to the aux input of the amplifier
- Connect the KSU dry contact to the terminal block
- Adjust the volume and the pitch

The generator will produce the night / tone ringing over PA system

ZC 9U ZONE CONTROLLER

- DTMF Controlled
- 9 Individual Zones
- Access Paging Port
- DIAL 1/2/3/4/5/6/7/8/9
- Plus All Call.....Dial 10 For All 9 Zones
- 50 WATTS / ZONE
- 9 Volt Operation
- 600 OHM INPUT TIP (RED) & RING (GREEN)
- Dry Contact Activation
- 70 OR 25 Volt Speaker Line



BAFFLES & BACK BOXES

Model	Specifications
TB11	<ul style="list-style-type: none"> - 12 inches round metal baffle - 4 mounting studs for speaker - 8 inch speaker mounts - Power coated speaker white - 20 AWG metal - 1.2 pounds - 4 mounting holes
TB25	<ul style="list-style-type: none"> - 12 inches square metal baffle - 4 mounting studs for speaker - 8 inch speaker mounts - power coated speaker white - 20 AWG metal - 4 mounting holes
TB8D TB10D	<ul style="list-style-type: none"> - 8 / 11 inch diameter plastic - 4 mounting speakers screws - for 6.5 & 8 inch speaker - fine metal mesh grill - 4 revolving legs for mounting
TB15D	<ul style="list-style-type: none"> - 7 inch round metal baffle - 2 mounting studs for speaker - fine white or black centre - designed for 4 inch speaker - 2 mounting holes for back box
TB15	<ul style="list-style-type: none"> - 7 inch round metal baffle - 2 mounting studs for speaker - 2 mounting holes for back box - designed for 4 inch speaker - speaker white colour
TB70 TB75	<ul style="list-style-type: none"> - 7/8 inch square metal - 2 speaker mounting studs - 2 / 4 mounting holes - designed for 4 inch speaker - speaker white colour
CF1 CC1	<ul style="list-style-type: none"> - Mounting bridge for baffle - mounting for all back boxes - cc1 rails for mounting - 22 AWG satin coat material - 23.5 inches long



BACK BOXES & SURFACE BOXES

Model	Specifications
TH10S	<ul style="list-style-type: none"> - Round Flush Stackable Metal Back Box - Fits Standard Round Baffle Tb11 - Height Is 4 Inches / Weight Is 2 Lbs
TH15	<ul style="list-style-type: none"> - Round Flush Metal Back Box - Fits Tb 15d / Tb15 / Tb70 Baffles - Size Is 5 X 4 Inches - Weight Is .5 Pounds
TH20	<ul style="list-style-type: none"> - Square Flush Metal 11 X 11 X 4 Inch Back Box - Fits Tb25 Square Baffle - Acoustically Treated Interior - Galvanized Steel Construction
SH20(B)	<ul style="list-style-type: none"> - Surface Square Back Box - White Power Coating - 4 Deep X 12.5 X 12.5 Inches Square - Welded Construction - 2.0/2.5 Lbs Weight (B) = With Solid Back
ESB8400	<ul style="list-style-type: none"> - Hanging Cylindrical Baffle - Designed Or 8 Inch Speaker - Recessed Black Or White Grill - White Colour - Size 14 X 10 Inches
SH6R	<ul style="list-style-type: none"> - Hanging Cylindrical Baffle - Designed For 8 Inch Speaker - Size 8 X 8 Inches / White Or Black - Separate Bracket Is Available



FANON MEGAPHONES

Model	Specifications	
MV6S	<ul style="list-style-type: none"> - Range 300 Yards - Power 6 Watts - Built In Siren - Batteries 6 AA Cells - Volume Control / Pistol Grip - Abs Bell Diameter- 160 Mm - Length 300 Mm - Weight 1.5 Kg 	
MP-3	<ul style="list-style-type: none"> - Range 100 Yards - Power 3watts - Built In Siren - Batteries AA Cells - Volume Control & Pistol Grip - Abs Bell Diameter 110 Mm - Length 170 Mm –Weight .8 Kg 	
MV10S	<ul style="list-style-type: none"> - Range 600 Yards - Power 10 Watts - Built In Siren - Batteries 6 C Cells - Pistol Grip With Volume Control - Carrying Strap - Abs Bell 180 Mm Diameter - Length 355 Mm– Weight 2.25 Kg 	
MV16S	<ul style="list-style-type: none"> - Range 800 Yards - Power 16 Watts - Built In Siren - Batteries 8 C Cells - Pistol Grip With Volume Control - Carrying Strap - Abs Bell 230 Mm Diameter - Length 410mm –Weight 2.7 Kg 	
MV1620S	<ul style="list-style-type: none"> - Range 800 Yards - Power 15 Watts - Built In Siren - Batteries 8 C Cells - Pistol Grip W/ Volume Control - Abs Bell 235 Mm Diameter - Length 400 Mm – Weight 2.8 Kg 	
MV2025S	<ul style="list-style-type: none"> - Range 1000 Yards - Power 20 Watts - Coil Microphone Attached - Built In Siren - Batteries 8 C Size Batteries - Abs Bell 235 Mm Diameter - Length 410 Mm –Weight 3.00 Kg 	

HORNS & DRIVERS

Model

Specifications

CS30

Sound Pressure: 101dB /W/m
Size: 10x8x8 inches
Taps: 30, 15, 7.5 & 3.8 Watts
Weight: 8.2 lbs



HA12/HA15

L. Frequency 220 Hz
Dispersion 95°
Air Column 600mm / 760 mm
Dimensions 250 mm / 280 mm Bell
260 mm / 290 mm Long
Weight 2.3 Kgm



HA20

L. Frequency 170 Hz
Dispersion 85°
Air Column 1050 Mm
Dimensions 510 Mm
Bell 380 Mm Long
Weight 3.1 Kgm



DU30T

. 30 Watts 70 Volt
. 250 – 12,500 Hz
. 30 / 15 / 7.5 / 4 / 2 Watts RMS
. 1.7 Kgm



DU60T

. 60 Watts 70 Volt
. 200 – 12,500 Hz
. 60 / 30 / 15 / 7.5 Watts RMS
. 1.9 Kgm



DU100T

. 100 Watts 70 Volt
. 200 – 12,500 Hz
. 100 / 50 / 25 Watts RMS
. 2 Kgm



DU100

. 100 Watts RMS
. 16 Ohms
. 220 – 14,000 Hz
. 1.5 Kgm



HORNS

Model

Specifications

SC30TW

Dispersion - 100° x 90°
Frequency Response - 280 - 12,500 Hz
Power - 30 Watts RMS
Sensitivity - 112dB
Size - 10" x 7"
Taps - 30 / 15 / 10 / 4 / 2 W 70 Volt
30 / 15 / 10 / 4 / 2 / 1.5 W 25 Volt



SH 15T/30T

Dimensions - 8" x 8" x 10"(15T)
10" x 9.5" x 10.5"(30T)
Dispersion - 110°(15T)
100°(30T)
Finish - Tan Mocha
Frequency Response - 275 - 14,000 Hz
Magnet - Ferrite



SH30TC

Power - 15(15T) 30(30T) Watts
Sound Pressure Level - 121dB(15T) 124dB(30T)
Dispersion - 120° x 60°
Frequency Response - 250 - 14,000 Hz
Power - 30 Watts RMS
Sensitivity - 125dB Size 11" x 7"
Taps - 30 / 15 / 8 / 4 W 70 Volt



TH32T

Dispersion - 120° x 90°
Frequency Response - 300 - 12,500 Hz
Power - 32 Watts RMS
Sensitivity - 121dB Size 11" x 7"
Taps - 32 / 16 / 8 / 4 / 2 W 70 Volt



TH16T

Dispersion - 130°
Frequency Response - 300 - 12,000 Hz
Power - 16 Watts RMS
Sensitivity - 119dB Size 7.5" x 10"
Taps - 16 / 8 / 4 / 2 W 70 Volt



HORNS

SH-15T / SH-30T

The Tortech SH-15T and SH-30T are all metal constructed high Efficiency horns. The SH-15T 15 Watt horn has a 8" bell and the SH-30T horn has a 10" bell. Both horns are constructed of Spun and die cast aluminum and the hardware is made of Stainless steel to stop corrosion. The voice coils are field replaceable. The transformer is soldered to the rotary switch for an easy selection of the desired wattage. There is a plastic window to cover and to protect the speaker terminals. The horn is tan in colour to blend into any environment.



Product Specifications:

Dimensions	8" x 8" x 10"(15T) 10" x 9.5" x 10.5"(30T)
Dispersion	110°(15T) 100°(30T)
Finish	Tan Mocha
Frequency Response	275 - 14,000 Hz
Magnet	Ferrite
Power	15(15T) 30(30T) Watts
Sound Pressure Level	121dB(15T) 124dB(30T)

SH-30TC

The TORTECH SH30TC high efficiency horn is engineered to be one of the finest and most versatile horns ever produced. The SH-30TC weather proof horn is constructed from 1-45-90°. The voice coil is fully field replaceable. All metal parts are zinc coated to prevent corrosion. The SH-30TC horn is designed for excellent voice reproduction.



Product Specifications:

Dispersion	120° x 60°
Frequency Response	250 - 14,000 Hz
Power	30 Watts RMS
Sensitivity	125dB
Size	11" x 7"
Taps	30 / 15 / 8 / 4 W 70 Volt

HORNS

MUSIC HORN CS-30

The Tortech CS30 30 watt RMS speaker is made from shock-resistant ABS weather proof plastic.

- One 120 mm high efficient speaker with a wide frequency range
- A constant 70/100 Volt transformer is built in the case with taps of 30, 15, 7.5 & 3.8 Watts
- Sound pressure 101 dB /W/m
- Weight is 8.2 lbs
- Size 10 x 8 x 8 inches
- Easy to mount with excellent
- Voice and music reproduction



TH-16T

Product Specifications:

Dispersion	130°
Frequency Response	300 - 12,000 Hz
Power	16 Watts RMS
Sensitivity	119dB
Size	7.5" x 10"
Taps	16 / 8 / 4 / 2 W 70 Volt



The TORTECH TH-16T horn is engineered to produce exceptional quality sound at a reasonable cost. The weather proof horn is constructed of high impact A.B.S. plastic and the hardware is zinc plated to corrosion. The base is adjustable both horizontally and vertically. The multi-tap 16 watt transformer is adjustable form two to 16 watts.



LINE MATCHING TRANSFORMERS

TLM7025 - 4 W / 70/25 V / 4/2/1/.5/.25 W TAPS
TB7025 - 10 W / 70/25 V / 10/5/2.5/1.25/.625 W TAPS
T716 - 16 W / 70 V / 16 / 8 / 4 / 2 W TAPS

TROUGH THE GLASS INTERCOMS

IMS-2 – Designed where safety is required



The new **IMS-2** can either be used with the existing microphone and speaker on the master station or the headset that can be activated on the master station and disconnecting the microphone and speaker. It is easy to install and comes with a headset. Truly able to handle all hands free two way communications needs.

- No glass cutting required
- Is compact and slim with a stainless steel case
- Speaker built in the base of the unit
- Adjustable gooseneck 380 mm
- Easy push to talk switches
- Built in voice feedback controls on both master and sub-station
- Built in **AUX output** for P.A. System
- Volume control for teller and customer unit
- Customer Unit **WEDGE** or **FLAT**
- Powered by DC12V
- 86 x 80 x 96 mm

IMS-1W Security/Bank Intercom

Features: I M Safe - 1



The new **IMS-1W** is now available with either a round on the glass speakers / microphone combination that does not require glass cutting or a wedge shaped speaker / microphone for the save station. Easy to install and operates on 12VDC.

- Priority conversations
- Hands free two way communications
- Built in voice feedback controls on both master and sub-station
- Easy to install
- 12 Volt DC operation
- Condenser gooseneck microphone
- No glass cutting required
- Brushed aluminum construction

MICROPHONES

Model	Specifications	
A2718 & A2813	Connection - XLR Male Frequency - 40 - 18,000 Hz Impedance - 600 Ohms Size - 18"(2718), 13"(2813) Type - Elect. Condenser Voltage - 9 - 52V DC	
MIC-200	Impedance - 500 Ohms Response - 50 - 12,500 Hz Switch - Push to talk Type - Dynamic unidirectional	
PA101/106	Connection - XLR Male Dimensions - 16" Directivity - Unidirectional Frequency - 60 - 15,000 Hz Switch - No(101) Yes(106)	
PM27	Dimensions - 7" Directivity - Unidirectional Frequency - 40 - 15,000 Hz Impedance - 300 Ohms Switch - Yes (On/Off)	
PM57	Connection - XLR Dimensions - 7" Directivity - Unidirectional Frequency - 40 - 15,000 Hz Impedance - 300 Ohms Switch - Yes (On/Off)	
PM58	Connection - XLR Dimensions - 7" Directivity - Unidirectional Frequency - 30 - 16,000 Hz Impedance - 250 Ohms Switch - Yes (On/Off)	
U31L	Impedance - 600 Ohms Switch - Yes Type - Dynamic	

MICROPHONES

WIRELESS 2 ANTENNA MICROPHONE

VX 116 AS Multi-Channel UHF
VLX 116 H/L Professional Series

Product Specifications:



Control	Squelch noise
Dimensions	125 x 115 x 39 mm
Output	Balanced XLR or unbalanced 6.3 mm connector
Power Supply	12V DC CSA/ULC approved adapter
Range	150'

THE TORTECH **VX-116** wireless **UHF MULTI-Channel** microphone is available in both handheld and tie clip. In the tie clip version, a head set model HS 12 is available. The microphone operates on ultra high frequency UHF band to ensure crisp and clean sound transmitting. The unit has a squelch noise control; the output is either a unbalanced 6.3 mm connector or a balanced XLR connector. The VX-116 power supply is a 12 Vdc CSA/.Ulc approved adapter. The general range of the VX-116 is 150 feet. The sensitivity is 3 UV for 20 dB and the size is 125 x 115 x 39 mm.

H12D DYMANIC HEADSET

- Extra Light Weight/ Excellent Quality
- Fit & Performance.



The Tortech **Slim Jim** gooseneck microphones are designed to produce excellent sensitivity and superior frequency response. They both look good and perform well.

A2713 is an electric condenser microphone that operates from 9-52 VDC

Pa106 is a dynamic microphone with an on/off switch

6205 s base has a switch and comes with a cord and XLR

6204 base is a circular black base with a female XLR and phone cord



PA 106



MICROPHONE ACCESSORIES

Microphone Bases



FLANGES / GOOSENECKS
MODEL 6504S / 6303 / U11/U12

Microphone Cables



20 FT / 50 FT / 100 FT

Microphone Floor Boxes

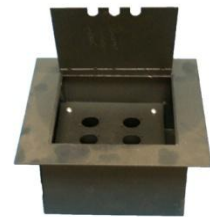
TFX-2 XLR Floor Box



TFX 4 XLR Floor Box



TFX 8 XLR Floor Box



Microphone Stands / Baby Boom

US10C / US110 / U100

Microphone Plates



Product Specifications:

NU3F	Female 3 pin XLR
NU3M	Male 3 pin XLR
NU5M	Inline male 5 pin XLR
UD5F	Chassis 5 pin XLR
PH1	Mono phono steel case
PH2	Stereo phono steel case
PH1G	Big berth phono
PHU11	Chassis mount mono phono
PHU12	Chassis mount stereo phono
UD3F	Chassis mount female 3 pin XLR
UD3M	Chassis mount male 3 pin XLR
WP3FSS	Single gang stainless steel plate with 1 - female chassis
WP3FSS4	Double gang stainless steel plate with 4 - female chassis XLR
WP3FSS6	Triple gang stainless steel plate with 6 - female chassis UD3F
WP3FSSD	Single gang stainless steel plate with 2 - female chassis UD3F
WP3MSS	Single gang stainless steel plate with 1 - male chassis XLR
WP3MSSD	Single gang stainless steel plate with 2 - male chassis UD3M

MICROPHONE FLOOR BOXES



MODEL TFX- 2

- Brass heavy duty flip cover
- Metal back box with knockouts
- Two female XLR & two ¼" headphones
- Size 4.5 x 4.5 x 2.5 inches



MODEL TFX-4

- Heavy duty cast steel flip cover
- Metal back box with knockouts
- Four female XLR connectors
- Size 8 x 4.5 x 2.5 inches
- Weight 2 pounds



MODEL TFX-8

- Brass heavy duty cover
- Solid steel back box with knockouts
- Six female XLR and ¼ "
- Size 5 x 5 x 5 inches
- Weight 7 pounds

PLASMA BRACKETS/ PROJECTION BRACKETS

Tortech universal projection brackets are designed to fit the latest version of projectors on the market. The projector brackets are designed with four adjustable security feet and are attractive to the eye and are easy to install and maintain.

Grabber

Tortech Universal Projection Brackets are designed to fit the latest version of projectors on the market. They have four adjustable security feet and are able to rotate 360 degrees. They are easy to install and maintain.



Product Specifications:

Colour	Silver or black
Load Capacity	7 Kg / 16 lbs
Rotation	360° and adjustable height

Spider



The units have a tilt angle of 15 degrees, can rotate 360 degrees, and has adjustable heights. Features a load capacity of 7 Kg or 16 lbs. It's minimum height is 5.9" with a maximum height of 16.6".

Product Specifications:

Colour	Silver or black
Load Capacity	7 Kg / 16 lbs
Rotation	360° and adjustable height

Plasma Brackets

LCD-30BWA

Corner Swivel
Bracket 66 Lbs
17 – 36 Inches



LDC 200

Adapter Plate
VESA 50/75/100/200



LCD 201T

Adapter Plate
For VESA 50/75/100
Tilt 15°



TTV 20

Size: 15-24"
Tilt and Swivel



TTV37

Size: 26-42"
Load: 160 Lbs.
Tilt 0 / 5 / 10°



TTV40

50/75/100/200 Mm
Fits 10-26 Inches



TTV63

Size: 32-65"
Load: 165 Lbs
Tilt 0 / 5 / 10°



TTV330T

Size: 20-30"
Load: 130 Lbs.
Tilt Up To 30°

PLASMA / PROJECTION BRACKETS

Ceiling Accessories



TTVX20

Ceiling Extension Pipe, Fits TV37

TTVX21

VESA 75/ 100 / 200 SIZE: 17-30" LCD

LOAD: 66 LBS CEIL MOUNT 34-60"

LCD Brackets



THE LCD-40 Is Designed To Hold
A 15- 28 Inch Height Adjustable
Plasma Bracket From the Ceiling

PORTABLE P.A. SYSTEMS

Portable Wireless AC/DC PA System

The **WA50-2** is 50 watt wireless p.a. with two VHF microphones and a rechargeable battery pack. The unit comes with a charger, three wired microphone inputs, one auxiliary input. Line out, tape record, Tone, extension speaker output, sturdy case, caster wheels, retractable pull handle and leatherette cover. Microphone can be handheld / tie clip and hs116 headset.



- 50 Watts RMS 100w peak
- SPL 110db
- 80Hz – 15kHz
- Wireless mic /s
- FM radio
- USB port
- SD port
- Echo control
- Tone controls
- RCA input
- Line output
- Speaker output
- Battery powered
- AC 110 vac /w/ power adapter
- mic #1 mic#2 -58dbv /w/ controls
- Priority on voice control
- Handle and rollers
- Sturdy case
- Speaker stand mount
- 19 x 12 x 11 inches
- 20 pounds

VP-15 Portable P.A.



The Tortech voice projector # **vp-15** is an over the shoulder portable p. A. It provides 15 watt of amplification with excellent voice reproduction. The Vp-15 operates on 8 "c" size batteries or it can be used with the tt125 ac Adapter. It has a detachable microphone or it can be use with the hs-11 Headset. The vp-15 is popular for police and fire department, schools events Guides, sporting events and crowd control.

SOUND MASKING

The sound solutions to the problems of speech privacy



Model	Description
TSM101	Wall mounted self contained noise masking random Digital generator is capable of producing a sound Masking noise with an output level of 1 volt into 600 Ohms or 8 ohms (0 db m). The TSM101 has a low and a high Pass filter. The unit operates n 24 volt age.
SM4RT-241	1 Watt 24 Volt amplified speaker w/ volume control.
SM4RTA	The 70 Volt speaker enclosure designed for the tsm101
SM4RTVA	The 70 Volt enclosure with volume control
SM4R8	The 8 ohm version of the speaker enclosure

Have any questions or concerns? Email or telephone us with any inquiries and we will see what we can do for you!

Telephone: 416-298-0448
Email: sales@tortechsound.com

SPEAKERS



TT820KRTB

Coaxial 8" Speaker 20oz Magnet
70volt And Back Box

TT820KRT

Coaxial 8" Speaker No Bk Box

TT610KRTB

Coaxial 6.5" Speaker 10 Oz Magnet
70 Volt With Back Box

TT610KRT

Coaxial 6.5" With 70 V No Back Box

TT609R Full Range 6.5" Speaker

TT609RT With 70 V Transformer

TT509R Full Range 5.5" Speaker

TT509RT With 70 V Transformer

CC 1 Mounting Rails For All
Of TT Series Speaker

CF 3 Pre-Contraction Brackets
For TT Series Speaker



TT81070TR

- Speaker Is 8 Inches Model # TT810
- Paper Cone With Whizzer
- 10 OZ Magnet
- Frequency Response 50- 14,000 HZ
- Transformer 4W 70/25 V Multi-Tap



TT810RT

- Model # Tt810
- 10 Ounce Magnet
- Dual Cone With Whizzer
- Tb10d Decorative Grill
- Frequency Response 50 – 14 KHz
- 70 /25 Volt 10/5/2.5/1.25/.625 Transformer

TT609RTM EASI-Clip

Specifications

6 Inch Dual Cone Speaker

Frequency Response 50- 12,500 Hz

70 Volt 5 W Multi-Tap Transformer

Metal Back Box For Fire Rated ceilings

Easie - Clip Mounting Brackets

- White Decorative Finish



SPEAKERS



TT8070TS

- Speaker Is 8 Inches
- Paper Cone with Whizzer
- 10 Oz Magnet
- Frequency Response 50- 14,000 Hz
- Transformer Is 4w 70/25 Volt

TH20 BACK BOX

- Square Plated 22 Gauge Metal Box
- 11 X 11 X 4 Inches Deep With Knock Outs
- Acoustic Treated Interior
- Fits Standard TB 25 Baffle

TB25 BAFFLE

- 12 X 12 Inches Metal Grill
- 22 Gauge Metal
- Power Coated With Speaker White
- 4 Mounting Holes to Fit Th20 Back Box
- 4 Mounting Studs to Secure 8" Speaker



SH20 / SH20B SURFACE BOXES

- Square 22 Gauge Metal Box
- Power Coated
- 12 X 12 X 4 Inches Deep
- Welded Construction
- Speaker White Colour
- Standard Mounting Holes TB25
- Conduit Knock Outs On Sh20b
- SH20b with Solid Back
 - SH20 with No Back

SPEAKERS – CONE



8CXP20

- 8 Inch Coaxial Speaker with A 20 Oz. Magnet
- Poly Cone And Reverse Rubber Surround
- 97 Db Spl & 25 Watts RMS with 1" Voice Coil
- Frequency Response 35 – 20,000 Hz – 8 Ohm



8CXP10

- 8 Inch Coaxial Speaker With 10 Oz. Magnet
- Poly Cone With Rubber Surround
- 95 Db SPL & 20 Watts RMS With A 1 "Voice Coil
- Frequency Response 40 – 20,000 Hz - 8 Ohms



TT810

- 8 Inch Dual Paper Cone with 10 Oz Magnet
- 92 Db Spl with A Formed Paper Edge - 15 Watts
- Frequency Response 50 – 16,000 Hz
- 8 Ohm with A 1 Inch Voice Coil



TT806

- 8 Inch Dual Paper Cone With 6 Oz. Magnet
- 90 Db Spl with A Formed Paper Edge - 15 Watts
- Frequency Response 50 – 15,000 Hz
- 8 Ohm With 1 Inch Voice Coil



TT610

- 6.5 Inch Poly Cone Speaker With 10 Oz Magnet
- 94 Db Spl With A Rubber Formed Edge
- Frequency Response 35 – 20,000 Hz
- 25 Watts @ 8 Ohms



TT420

- 4 Inch Coaxial With 10 Oz Magnet @ 8 Ohms
- 92 Db Spl With A Paper Cone
- Frequency Response 40 – 20,000 Hz @ 20 Watts





TT410

- 4 Inch Dual Cone With 10 Oz. Magnet @ 8 OHMS
- 90 dB SPL @ 15 WATTS & F.R. 60 – 12,000 Hz

TT406

- 4 Inch Paper Cone 6 Oz Magnet @ 8 OHMS
- 89 dB SPL @ 10 WATTS & F.R. 70 – 11,000 Hz

SPEAKERS – EMS INDOOR / OUTDOOR

	<p>EMS 440 (T) Power 45 Watts Woofer 4 INCH Tweeter 1.5 Inches RESPONSE 40- 18KHz "T" 16 / 8/ 4 /2 Watt 70 Volt</p>	<p>EMS 660 (T) Power 60 Watts Woofer 6.5 Inches Tweeter 2 Inches Response 30- 18KHz "T" 50 / 40/ 30/ 20/ 10 Watt 70 Volt</p>	<p>EMS880 (T) Power 120 Watts Woofer 8 Inches Tweeter 2 Inches Response 25 – 18 KHz "T" 50 / 40 / 30 / 20 / 10 Watt 70volt</p>
 WITH SWIVEL BRACKET	<p>EMS-50T Power 45 Watts (8 Ohm) Woofer 5" Poly Tweeter 1.5" Transformer 70 Volt Taps 16/8/4/2 Watts +8Ω F-Response 50-16khz</p>	<p>EMS-60T Power 60 Watts Woofer 6.5" Poly Tweeter 2" Transformer 70 Volt Taps 50/40/30 20/20 W +8Ω F-Response 40-18,Khz</p>	<p>EMS-80T Power 120 Watts Woofer 8 " Poly Tweeter 2" Transformer 70 Volt Taps 50/40/30/20/10 W + 8Ω F-Response 30-20 KHz</p>

SPEAKERS - HANGING



ESS 45 Hanging Speaker

The **ESS-45** is a cylindrical baffle. It is designed to accommodate any 4 inch speaker. The cabinet is acoustically treated. It has an attractive Look. Available in black or white. The ESS45T Has the TT410/4W speaker & transformer.



ESS-85 Hanging Speaker

The **ESS-85** is a complete hanging speaker assembly. The cabinet is acoustically treated. It has the 8cxp20/16 speaker and transformer installed. The cabinet has three eye bolts for hanging.



SHS-4WT Hanging Speaker

The **SHS4W** is a hanging speaker cabinet that is populated with a 4 inch model T410/4W speaker and transformer. The size is 6.5 x 6.5 x 4 inches. The cabinet is a durable powder coated finish.

SPEAKERS - OUTDOOR LANDSCAPE



GS3

- 360° Surround Sound
- Full 150 Watt Driver
- 6.5 Inch Coaxial Poly Speaker
- 2 Inch Aluminum Tweeter
- 8 Ohm Or 70 Volt Version
- 4.5 KHz Crossover / 40-18,000 Hz
- Abs Resistant Housing
- Forest Green Colour
- Weight 14 Lbs
- Size 14" X 12" X 12"



GS-6

- 360° Surround Sound
- 50 –18 KHz Response
- 4-8 Ohm Or 70 Volt Version
- 25 Watts RMS
- Fiberglass Construction
- 5 Inch Poly Speaker
- Slade Green
- Weight 10 Lbs
- Size 14" X 11"



GS6 – ROCK

- Exterior Rock Speaker
- Multilayer Composite Material
- Full 150 Watts Driver
- 6.5 Inch Coaxial Speaker
- 2 Inch Aluminum Tweeter
- 4.5 KHz Crossover
- Canyon Slate Or Granite Finish
- Weight 16 Lbs
- Size 19" X 14" X 11.5"



EMS 330

- 3 Inch Full Range Speaker
- Sensitivity 86db
- 15 Watts RMS
- 40-15,000 Hz
- Swivel Ball Joint Bracket

OMNI-DOME SURROUND SOUND SPEAKERS

ESP- engineered sound products –is a clean line, full frequency conical speakers. The Omni -dome woofer and four matching high powered compression horns gives these speakers full range sound projection. The ESP 800, 1000, & 1200 will provide 360 °x 180 ° of surround sound coverage in any large recreational facility, Convention center, gymnasium, sports area, community halls, banquet, Halls, schools, churches, shopping centers, super box stores, airports, bus or train stations, theaters and pools.

Full fidelity - for voice or music with a full frequency response ranging from 40 Hz to 20 kHz. The central cluster speaker cabinet has a tuned port and Optimum “x” cross over net work for maximum performance.

ESP 800 5000 SQ FT

Product Specifications:



Coverage	360° horizontal 180° vertical
Frequency Response	40 - 20,000 Hz
Height	9"
Impedance	Normally 8 Ohms with optional 25V or 70V
Power	80 Watts RMS
Sensitivity	96dB per Watt per Meter
Weight	15 lbs

ESP 1000 10,000 SQ FT

Product Specifications:



Coverage	360° horizontal 180° vertical
Frequency Response	40 - 20,000 Hz
Height	12"
Impedance	Normally 8 Ohms with optional 25V or 70V
Power	250 Watts RMS
Sensitivity	99dB per Watt per Meter
Weight	30 lbs

SPEAKERS – SURROUND SOUND OMNI-DOME

ESP 1200 12,000 SQ FT



Product Specifications:

Coverage	360° horizontal 180° vertical
Dimensions	24" High x 24" Top x 14" Bottom
Frequency Response	35 - 20,000 Hz
Impedance	Normally 8 Ohms
Power	300 Watts RMS
Sensitivity	102dB per Watt per Meter
Weight	40 lbs

ESP 1500



Product Specifications:

Coverage	360° horizontal 180° vertical
Dimensions	28" High x 28" Top x 18" Bottom
Frequency Response	20 Hz – 20 KHz
Power	350 Watts RMS
Sensitivity	102dB per Meter
Weight	75 lbs

Omni-Dome VP-360 Voice Projector



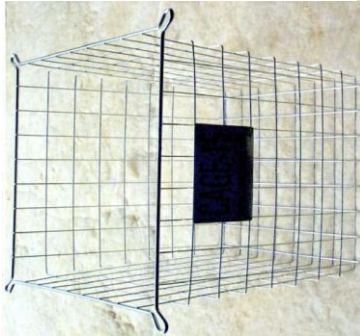
Product Specifications:

Coverage	360° horizontal 90° vertical
Frequency Response	50 - 12,000 Hz
Power	60 Watts RMS

The **Voice Projector 360** is a new **O-D** surround sound concept. The ESP-360 is engineered to produce exceptional voice quality sound in a 360 degree pattern reaching all corners of the paging area. The **VP-360** contains eight three inch full range speakers in a linearly configuration to produce an excellent surround sound. The six and half inch woofer is used to enhance the quality of the both the voice and music reproduction on the VP-360.

TORTECH CAGE

The Protector: Cage-15 Stainless Steel Cage



The **Tortech Cage – 15 SS** is a stainless steel protective cage made to protect equipment from being removed or damaged from the intended location. The cage size is 15 x 15 x 15 inches at the top and tapers to 14 x 14 x 14 inches at the bottom. This allows the cage to be stackable. The cage-15 is made from amazing 300 pound tensile strength stainless steel wire .the joints have been welded by auto robotics plus the entire cage 15 SS has been chrome plated to prevent rusting.

VOLUME CONTROLS

Autoformers 70 / 25v Volume Controls

	Name	Power	Plate	Control
	VC 1070TW	10W	White single gang	3dB - 10 Steps
	VC 1570TW	15W	"	"
	VC 2070TW	20W	"	"
	VC 2070TSS	20W	Stainless steel single gang	3dB - 10 Steps
	VC 1070TD	10W	Decora type white	3dB - 10 Steps
	VC 2070TD	20W	"	"
	VC 3570TD	35W	"	"
	VC 7570TD	75W	"	"



Tortech Designed and Engineered!