



## Brief Introduction

UC46 is expansion module for Color IP Phones. It expands the functional capability of your VoIP phone to a whole new level. Press   to change the pages. Two page views allow 40 programmable keys that work as BLF, Speed Dial, Call Park, Pickup etc.

## Basic Configurations

### How to connect to the IP Phone - Change the IP Phone to "Connect to Expansion Module"

Log on the web page of Phone, on the page "Network →Basic", PC Port option, choose "Connect to Expansion Module". After save set the Phone will reboot.

### Line

- 1) Click on Function Keys->Ext Key.
- 2) In the desired key field, select Line from the pull-down list of Type.
- 3) Select the Account from the pull-down list of Account.
- 4) Click "save set" to save the configuration.

### BLF

- 1) Click on Function Keys->Ext Key.
- 2) In the desired key field, select BLF from the pull-down list of Type.
- 3) Enter the phone number or extension you want to monitor in the Value field.
- 4) Enter the desired value in the Label field.
- 5) Select the Account from the pull-down list of Account.
- 6) Enter the call pickup code in the Pickup code field.
- 7) Click "save set" to save the configuration, and restart.

### Speed Dial

- 1) Click on Function Keys->Ext Key.
- 2) In the desired key field, select Speed Dial from the pull-down list of Type.
- 3) Enter the desired number you want to dial out directly in the Value field.
- 4) Enter the desired value in the Label field.
- 5) Select the Account from the pull-down list of Account.
- 6) Click "save set" to save the configuration.

### Intercom

- 1) Click on Function Keys->Ext Key.
- 2) In the desired key field, select Intercom from the pull-down list of Type.
- 3) Filled the Value field.
- 4) Enter the desired value in the Label field.
- 5) Select the Account from the pull-down list of Account.
- 6) Click "save set" to save the configuration.

### Call Park

- 1) Click on Function Keys->Ext Key.
- 2) In the desired key field, select Call Park from the pull-down list of Type.
- 3) Enter the call park feature code in the Value field.
- 4) Enter the desired value in the Label field.
- 5) Select the Account from the pull-down list of Account.
- 6) Click "save set" to save the configuration.

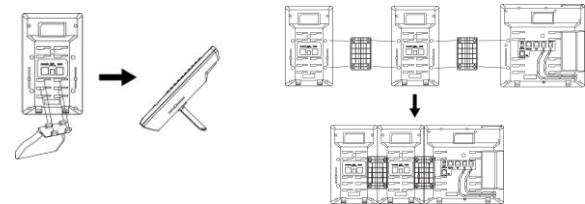
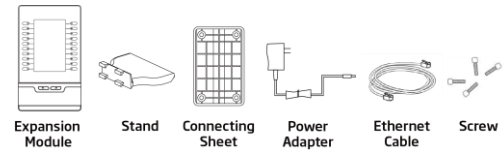
### Direct Pickup

- 1) Click on Function Keys->Ext Key.
- 2) In the desired key field, select Direct Pickup from the pull-down list of Type.
- 3) Enter the direct call pickup code followed by the specific number you want to pick up calls from in the Value field.
- 4) Enter the desired value in the Label field.
- 5) Select the Account from the pull-down list of Account.
- 6) Click "save set" to save the configuration.

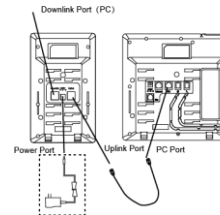
For More information, Please refer to user manual or send email to [support@htek.com](mailto:support@htek.com)

## Connecting

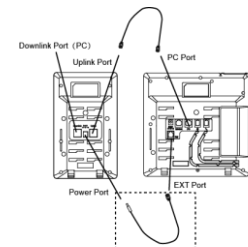
Note: please install the phone stand first before connecting the expansion module to the phone through the connecting sheet.



There are two ways to power the first expansion module: via the power adaptor or connecting power cable to the EXT port on the phone.



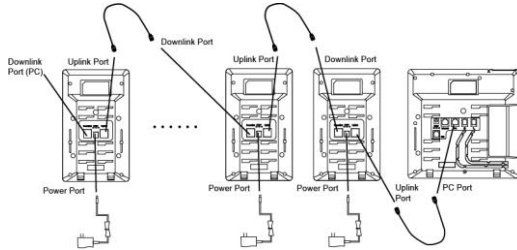
By the power adaptor



By connecting power cable to the EXT port

Except the first expansion module, the second, the third and the rest expansion modules can only be powered by power adaptor. (Note: Only the first EXT can powered by the power cable.)

One phone can support up to 6 expansion modules at one time.



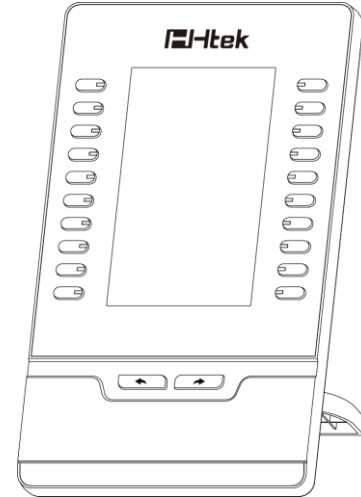
#### FCC Statement

1. This device complies with Part 15 of the FCC Rules. Operation is subject to the following two conditions:
  - (1) This device may not cause harmful interference.
  - (2) This device must accept any interference received, including interference that may cause undesired operation.
2. Changes or modifications not expressly approved by the party responsible for compliance could void the user's authority to operate the equipment.

NOTE: This equipment has been tested and found to comply with the limits for a Class B digital device, pursuant to Part 15 of the FCC Rules. These limits are designed to provide reasonable protection against harmful interference in a residential installation. This equipment generates uses and can radiate radio frequency energy and, if not installed and used in accordance with the instructions, may cause harmful interference to radio communications. However, there is no guarantee that interference will not occur in a particular installation. If this equipment does cause harmful interference to radio or television reception, which can be determined by turning the equipment off and on, the user is encouraged to try to correct the interference by one or more of the following measures:

- Reorient or relocate the receiving antenna.
- Increase the separation between the equipment and receiver.
- Connect the equipment into an outlet on a circuit different from that to which the receiver is connected.
- Consult the dealer or an experienced radio/TV technician for help.

## Expansion Module



## Quick Reference For UC46